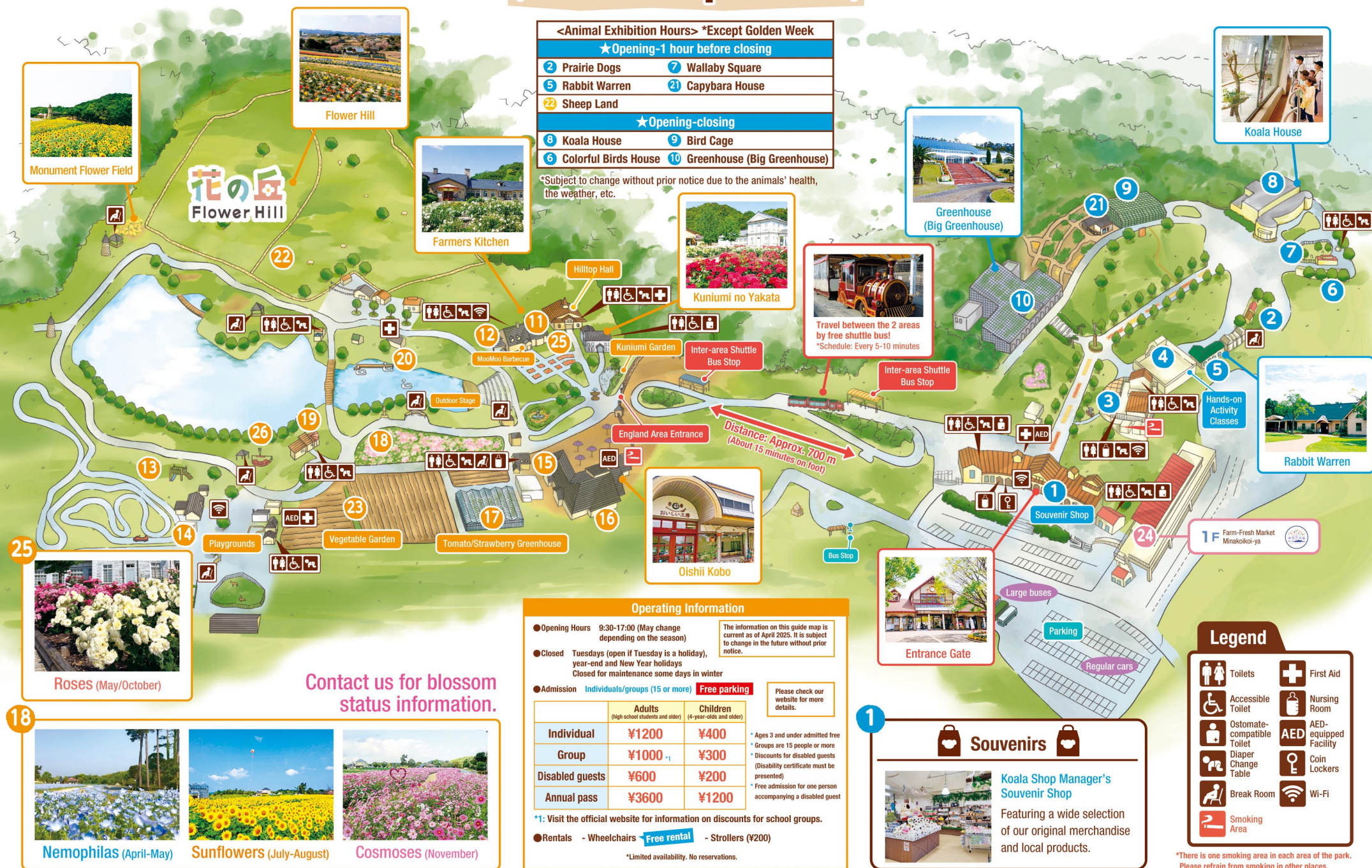


England Hill Map

England Area

Green Hill Area



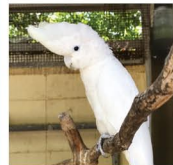
Animals

Sheep Land 22



The sheep frolic in a vast pasture.

Colorful Birds House 6



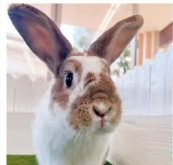
Meet rare birds, such as Solomons cockatoos and sun parakeets.

Bird Cage (Tonde Tonde no Mori) 9



Many animals such as squirrel monkeys, crowned cranes, and silvery-cheeked hornbills live here.

Rabbit Warren (Indoor) 5



A precious place to meet rabbit and guinea pig breeds that are rare in Japan, such as English Angoras and Rhinelanders.

Wallaby Square 7



Meet small and adorable wallabies, pelicans and emus!

Prairie Dogs 2



See prairie dogs that are expert diggers.

Capybara House 21



An area especially for capybaras, with a glass pool to watch them swim up close.

Koala House 8



The only place in Japan breeding large southern koalas. Compare how they are different from the northern koalas also visiting the park (*).
*For the plan to breed koalas in Japan

Food replacement time: From 11:30

You might be able to see koalas awake even though they are usually asleep during most of the day!

Food

Hamburgers Koala Island Burger 3



A hamburger shop serving homemade special ground beef and pork patties and buns.

Japanese & Western Farmers Kitchen 11



Enjoy dishes ranging from local Awaji Island specialty "gyudon" (a rice bowl topped with beef) and noodles to local vegetables.

Barbecue MooMoo Barbecue 12



Savor BBQ in the fully air-conditioned indoor seating or terrace seating with a great view.
*Some days may be closed to ordinary customers. Please check the website.

Oishii Kobo 16



Island Honey Bread



Island Cheesecake



Pizza Ishigama Pizza Kobo 15

Enjoy pizza baked with firewood in a brick oven, made with crust left to rise at a low temperature over 24 hours.



Cafe Milk House 19

Enjoy dairy products made at our own processing plant. Have a taste of soft-serve ice cream, pudding, and other treats carefully made with plenty of Awajishima Milk!

Home Workshop

Greenhouse

Big Greenhouse 10

See a variety of species including native Australian plants.



You can meet reptiles like tortoises, snakes, and lizards inside the Big Greenhouse!

Play

Playgrounds 14

Important note when using play equipment:
*Attendants should be middle school students or older

Discount tickets for play equipment are available for purchase at the entrance gate!
That's a ¥500 discount!
Spend ¥3,000 for a ticket worth ¥3,500!

Go-Karts



1 kart: ¥800
Driver should be 140 cm or taller

Horse Riding



Single rider (5 years and older): ¥700
Parent & child (adult + 4-year-olds or younger): ¥900

Trampoline



¥300/person, ¥600/2 people
3 years and older, 2-year-olds and younger must be accompanied

Ground Golf



¥500/set
9 holes total

Boats



¥1000 (15 minutes)
Elementary school students and younger must be attended.



¥300 yen/1 time/9 balls



¥400/person, ¥600/2 people
3-year-olds and younger must be accompanied



¥300/person
Guests younger than elementary school age must be accompanied



¥800/person (3 minutes)
4 years and older, 15-80 kg weight restriction



Free to use

Activities

Hands-on Activity Classes 4

Craftwork Activities



- Gel candles
- Herbariums
- Mini aquariums, etc.

Food Activities



- Bread baking
- Melon-shaped sweet bun baking, etc.

*Content varies each day.
Please visit the website for details.

Harvesting Activities

Vegetable Garden 23



Pick seasonal vegetables such as onions, summer vegetables, and sweet potatoes!

Tomato/Strawberry Greenhouse 17



Enjoy picking the popular favorites: strawberries and tomatoes!

*May be canceled in bad weather.
Closed: Tuesdays (Please visit the website for details.)